

EnviraSlim Sliding and Stacking Doors



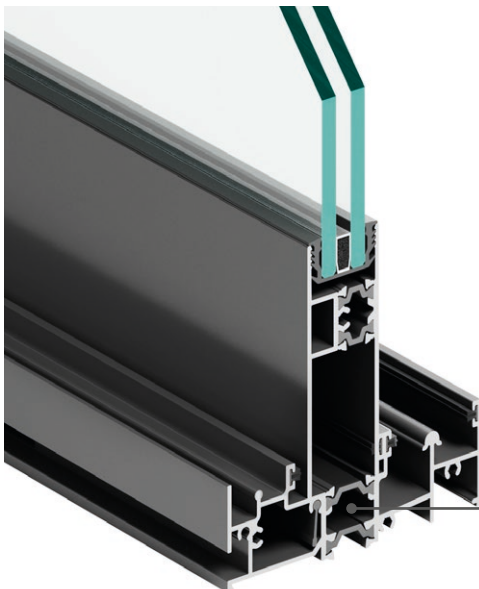
Thermally broken aluminium



A BRAND FAMOUSLY TRUSTED FOR 75 YEARS.

Enjoy our renowned craftsmanship and quality with the Stegbar EnviraSlim sliding and stacking door. Door heights of up to 2600mm allow you to connect the inside of your home with the outdoors while the slim frames deliver maximum views. Premium hardware and design details like the flush threshold sill provide outstanding performance and aesthetics that are built to last.

- Square slimline frame for a clean, minimalist style.
- Lowline sill profile helps achieve flush thresholds with matching heights inside and out.
- Overlapping interlocks provide uninterrupted views.
- Two types of interlockers depending on your performance needs.
- Handle with integrated lock and snib.
- Bespoke heavy-duty 32mm roller system provides smooth and easy operation and installation.
- Integrated insect screen channel suits standard screens.
- Double glazing prevents heat transfer between inside and outside and promotes high-performance energy efficiency.
- Mohair seals improve sealing between panels for energy and acoustic performance.
- Concealed, shadow-line drainage slots.
- Available in a variety of configurations for design flexibility.
- Panels can be reversed on-site allowing for handling flexibility pre or post-installation.
- Panels are removable by lifting the sash up into the head, for easy maintenance of rollers and tracks.
- A range of glazing options to improve comfort, serenity, security and privacy.



Thermally Broken Frames

Provide optimum energy performance, reduce energy costs, and improve comfort.

EnviraSlim Sliding and Stacking Doors



Thermally broken aluminium

SPECIFICATIONS

Product	Sliding and Stacking Doors
Product series	EnviraSlim
Frame profile	Sliding door – 106mm x 35mm. Stacking door – 172mm x 35mm
Sill	Accessible sill as standard
Max frame	2600mm high
Max sash	2545mm high x 1500mm wide Max weight 200kgs
Sash profile	Stiles – 60mm. Rails – 84mm. Interlock – 46mm
Glazing	20mm Double glazing only
BAL rating	BAL40
Seal type	Mohair with a fin
Colour options	Black Matt, White Gloss, Surfmist Satin and Monument Matt
Screen options	Insect screens and safety screens
Hardware	D Handle with integrated snib (inner) and slim handle (outer)
Installation	By builder or Stegbar installation service
Warranty	10-year warranty

For full range of configurations and standard sizes refer to the standard size and range charts.

PERFORMANCE



Accessible slimline flat sill

Achieve flush thresholds with matching heights inside and out.

Acoustic Performance	
Performance Criteria	Glass Type
RW32	Double glazing – 4/12Ar/4
RW32	Double glazing – 6/8Ar/6
RW34	Double glazing – 4/10Ar/6.38 Lam
RW34	Double glazing – 6/6Ar/10.38 Lam
RW35	Double glazing – 4/10Ar/6.5 Vlam Hush
Wind & Water Performance	
Performance Criteria	Rating
SLS	800Pa
ULS	2000Pa
Water	200Pa
N Rating	N4
Thermal Performance	
Performance Criteria	Rating
Double Glazed Uw Range	1.7 – 2.8
Double Glazed SHGC Range	0.20 – 0.64

EnviraSlim Sliding and Stacking Doors



Thermally broken aluminium

HARDWARE



D Handle (inside)

Slim Handle (outside)

SCREENS



Aluminium sliding screen fixed externally



Aluminium stacking screen fixed externally

EnviraSlim Sliding and Stacking Doors



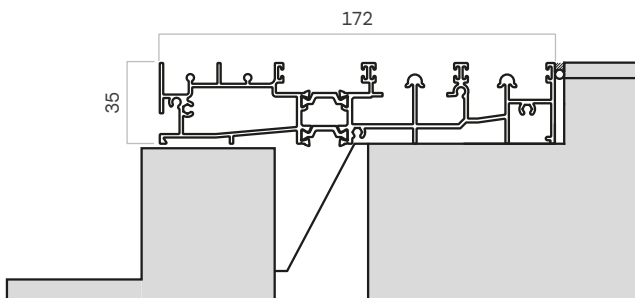
Thermally broken aluminium

SILL BUILDING IN DETAILS

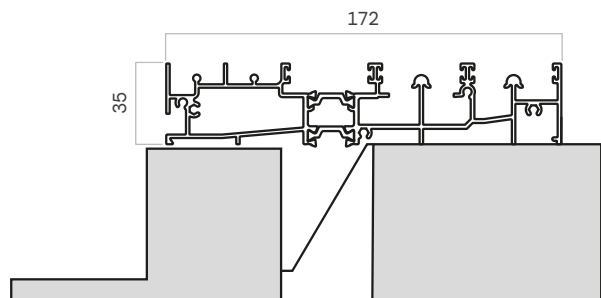
172mm Stacking door sill



Flush threshold shown above



Flush threshold



Standard threshold

Concrete cutout is the responsibility of the builder.

EnviraSlim Sliding and Stacking Doors



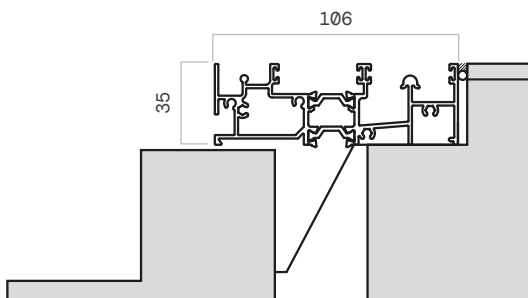
Thermally broken aluminium

SILL BUILDING IN DETAILS

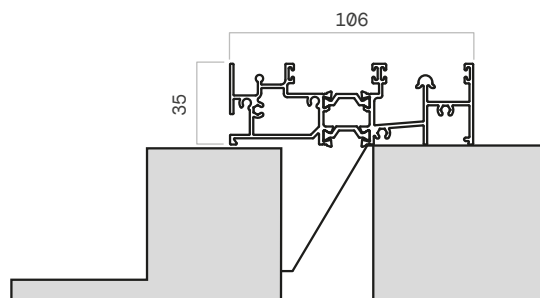
106mm Stacking door sill



Flush threshold shown above



Flush threshold



Standard threshold

Concrete cutout is the responsibility of the builder.

Whilst the utmost care is taken to ensure the accuracy of the information contained herein, it is provided in the understanding that the company shall under no circumstances be liable for any injuries, expenses or other losses which may in any way be attributable to the use or adoption of such data and/or design details. Stegbar reserves the right to alter or amend without prior notice data and design details specified herein. stegbar.com.au JWSNAT0599/0723